

# A1 Birtley to Coal House

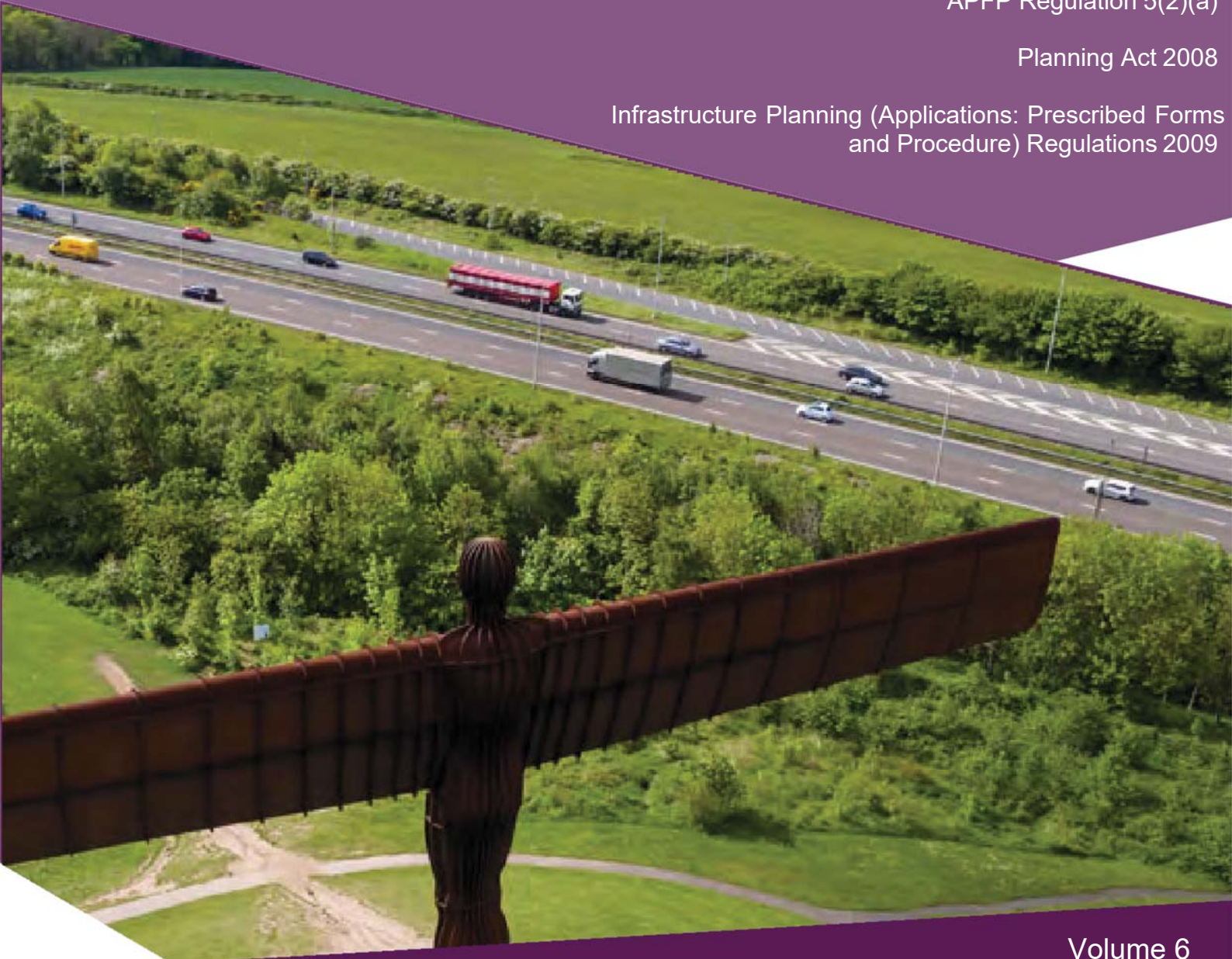
## Scheme Number: TR010031

### 6.3 Environmental Statement – Appendix 11.7 Baseline Noise Survey, Meteorological Data

APFP Regulation 5(2)(a)

Planning Act 2008

Infrastructure Planning (Applications: Prescribed Forms  
and Procedure) Regulations 2009



Infrastructure Planning

Planning Act 2008

**The Infrastructure Planning  
(Applications: Prescribed Forms and  
Procedures) Regulations 2009**

**A1 Birtley to Coal House  
Development Consent Order 20[xx]**

---

**Environmental Statement -  
Appendix**

---

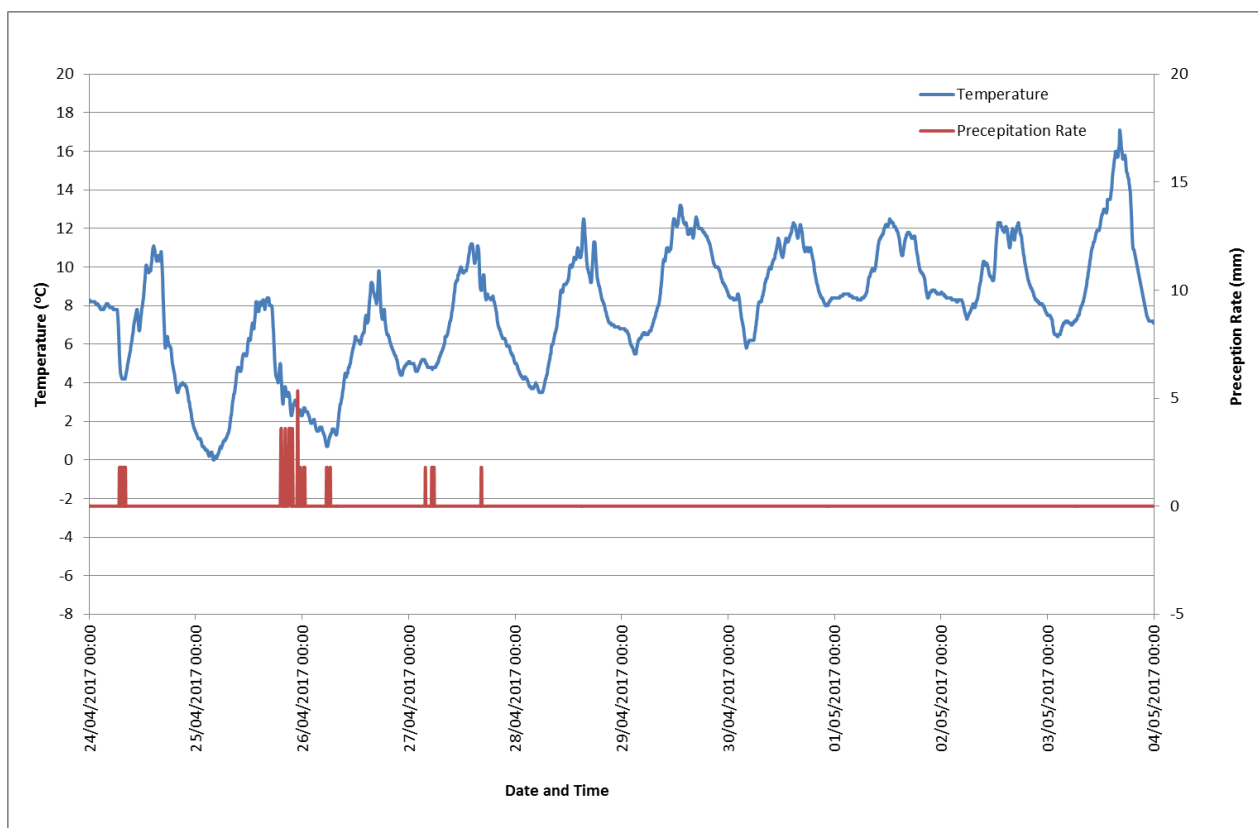
<b>Regulation Reference:</b>	APFP Regulation 5(2)(a)
<b>Planning Inspectorate Scheme Reference</b>	TR010031
<b>Application Document Reference</b>	TR010031/APP/6.3
<b>Author:</b>	A1 Birtley to Coal House Project Team, Highways England

<b>Version</b>	<b>Date</b>	<b>Status of Version</b>
Rev 0	14 August 2019	Application Issue

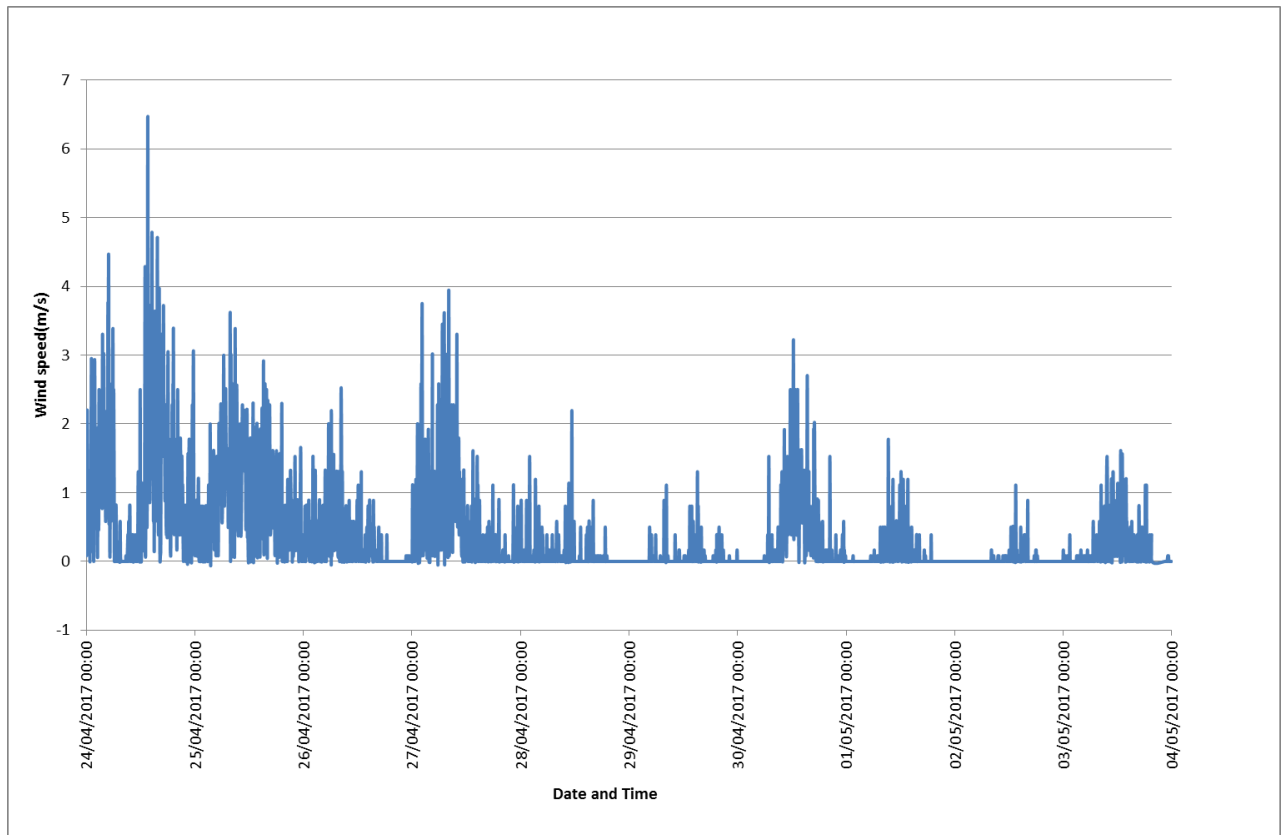
## BASELINE NOISE SURVEY, METEOROLOGICAL DATA

1.1.1. The following graphs present the temperature, rainfall, wind speed and wind direction data for the duration of the baseline noise survey, as obtained from [www.wunderground.com](http://www.wunderground.com) for weather station ID IGATESHE12, which is that closest to the Scheme Footprint.

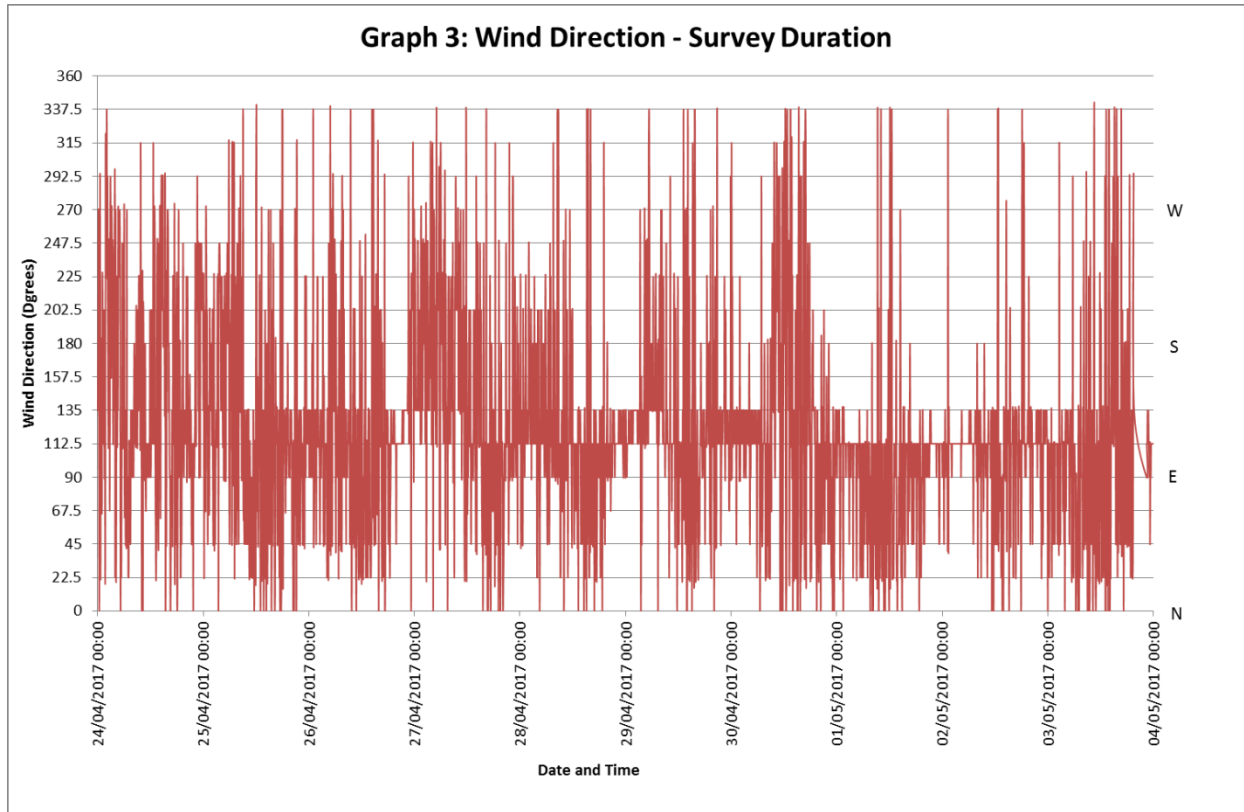
**Graph 7-1 – Baseline Noise Survey – Prevailing Temperature and Rainfall Rates**



**Graph 7-2 – Baseline Noise Survey – Prevailing Wind Speed**



Graph 7-3 – Baseline Noise Survey – Prevailing Wind Speed



If you need help accessing this or any other Highways England information, please call **0300 470 4580** and we will help you.

---

© Crown copyright 2019.

You may re-use this information (not including logos) free of charge in any format or medium, under the terms of the Open Government Licence. To view this licence:

visit [www.nationalarchives.gov.uk/doc/open-government-licence/](http://www.nationalarchives.gov.uk/doc/open-government-licence/)

write to the **Information Policy Team, The National Archives, Kew, London TW9 4DU**, or email

[psi@nationalarchives.gsi.gov.uk](mailto:psi@nationalarchives.gsi.gov.uk).

This document is also available on our website at [www.gov.uk/highways](http://www.gov.uk/highways)

If you have any enquiries about this document [A1BirtleytoCoalhouse@highwaysengland.co.uk](mailto:A1BirtleytoCoalhouse@highwaysengland.co.uk) or call **0300 470 4580\***.

\*Calls to 03 numbers cost no more than a national rate call to an 01 or 02 number and must count towards any inclusive minutes in the same way as 01 and 02 calls.

These rules apply to calls from any type of line including mobile, BT, other fixed line or payphone. Calls may be recorded or monitored.

Registered office Bridge House, 1 Walnut Tree Close, Guildford GU1 4LZ  
Highways England Company Limited registered in England and Wales number 09346363